

HOW CAN YOU HELP?

The answer to that question is simple: get involved. How your local officials address your community's congestion depends on your voice as much as anything else. If you don't speak up, officials won't know there's a problem or understand it's a priority for your community.

With your input, your city transportation professionals can work with metropolitan planning organization (MPO), county, state, and federal counterparts to improve mobility in your community. You can help them prioritize that work by speaking out individually or through civic groups at city council meetings.



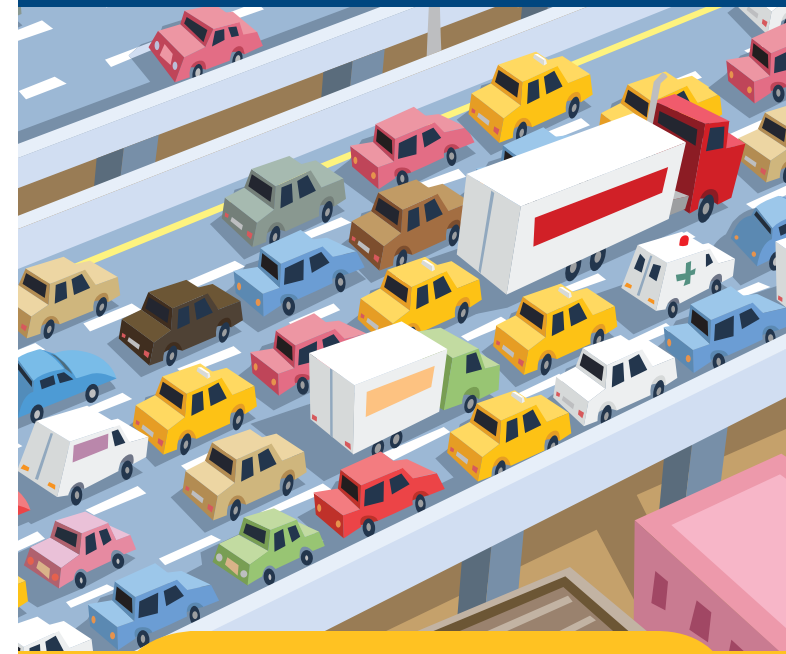
Let your elected officials know that transportation is a vital part of your daily life. Your community's roads carry you back and forth to work. They carry your children back and forth to school. They provide access for you to shop, eat, and spend leisure time. In order to make them safer, more efficient, and less stressful, voice your concerns to your elected officials and transportation professionals.

Help them help you achieve a higher standard of driving for your growing community.

FOR MORE INFORMATION

For more information about issues regarding mobility, please visit <http://mobility.tamu.edu/resources> under the heading of "Mobility Monitoring in Small to Medium-Sized Communities."

The content of this brochure represents the findings of
Research Product: 0-5571-P1
Project Number: 0-5571
Research Project Title: Congestion Monitoring Measures
and Procedures for Small to Medium-Sized
Communities
February 2008



FRUSTRATED BY BIG CITY CONGESTION IN YOUR COMMUNITY?



*We're Working to Improve
Your Standard of Driving*





GROWING PAINS

The needs of communities, like those of people, change over time. Often the original designers of a city's transportation system cannot accurately predict the needs of a particular neighborhood 10, 20, or 50 years down the road. This



By monitoring traffic mobility in your community, your city's transportation professionals can determine where traffic problems exist and why.

is especially true of a community's transportation infrastructure.

Roads are the arteries of any community. They carry the lifeblood of commerce from citizen to business owner.

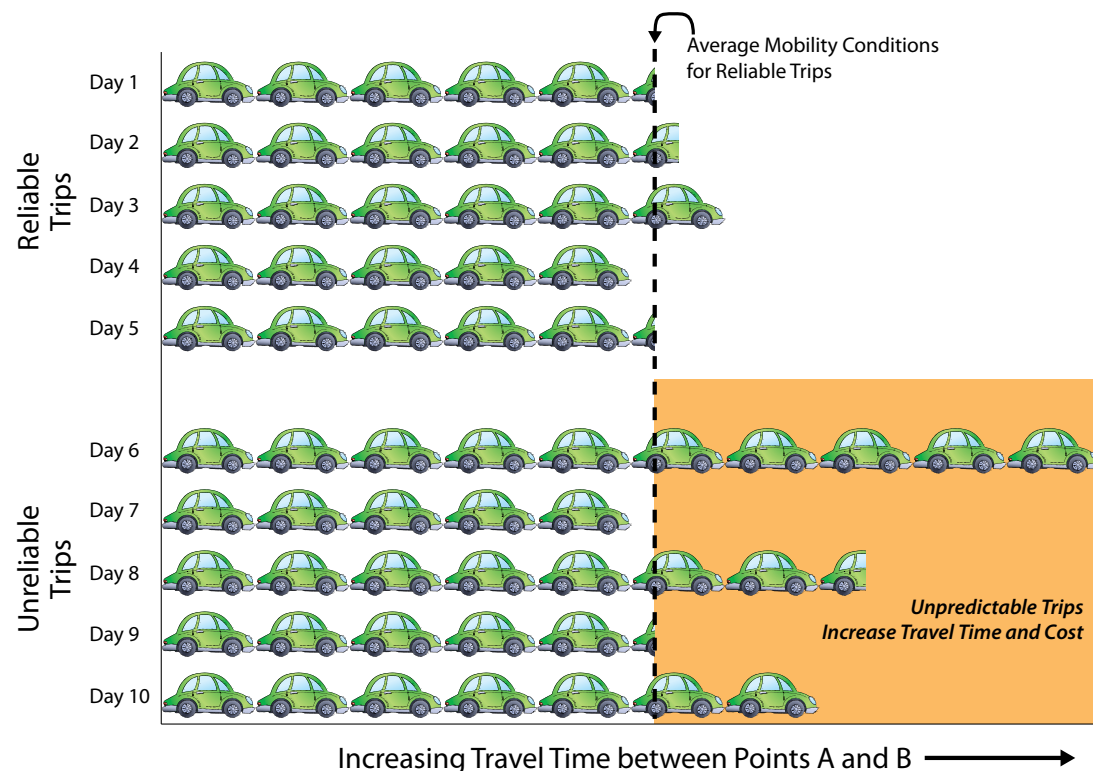
But as a city matures, sometimes those arteries get clogged, and traffic mobility can be affected. Your community grows in population, which means more people drive cars and

more trucks deliver goods. More cars and trucks mean more traffic. Trying to manage more with the same system you had in earlier times can cause problems. So something has to be done to relieve the pressure on the system.

By monitoring traffic mobility in your community, your city's transportation professionals can determine where traffic problems exist and why. With your input, they can improve your local transportation network with innovative solutions aimed at reducing congestion. So how can you help them do that? Read on to discover how to get involved in improving your community's standard of driving.



Illustration and comparison of mobility and reliability.



WHAT ARE MOBILITY, CONGESTION, AND RELIABILITY ANYWAY?

Mobility is a flexible term that means the ability to reach a destination in a satisfactory time and at a reasonable cost. Local transportation professionals, with citizen input, can estimate performance measure targets of time and cost based on that community's needs. For example, your city council may decide that it should take no longer than five minutes to reach the town square from the city limits. If it takes more time, your community's mobility has been compromised.

Congestion is the result of compromised mobility. Traffic backs up. Drivers get frustrated. Tempers flare. Businesses might even lose money because of congestion. All because your community's reasonable expectations for mobility are not being met.

Reliability is the level of consistency in transportation service (hour to hour and day to day). For example, can you count on getting to work on time every day if you leave at the same time and take the same route?

IS CONGESTION A PROBLEM IN YOUR COMMUNITY?

That's a great question, and here are a few more. Has traffic gotten worse in this community since you've been living here? Does it take longer to get around town? Do roadway incidents occasionally lead to an unreliable trip? Have you noticed your frustration level being higher when driving than it used to be?

If you can answer "yes" to any of these questions, there could be a mobility problem in your community. The most likely reason for this is simple: when a city grows, its population usually grows faster than its transportation system.

Be aware that multiple agencies often have jurisdiction over the roadways in your community. Cities share responsibility with state and federal agencies for maintaining and operating some roadways, while being completely responsible themselves for other roadways. So it's quite likely that any solution to mobility problems in your neighborhood will require teamwork to solve.